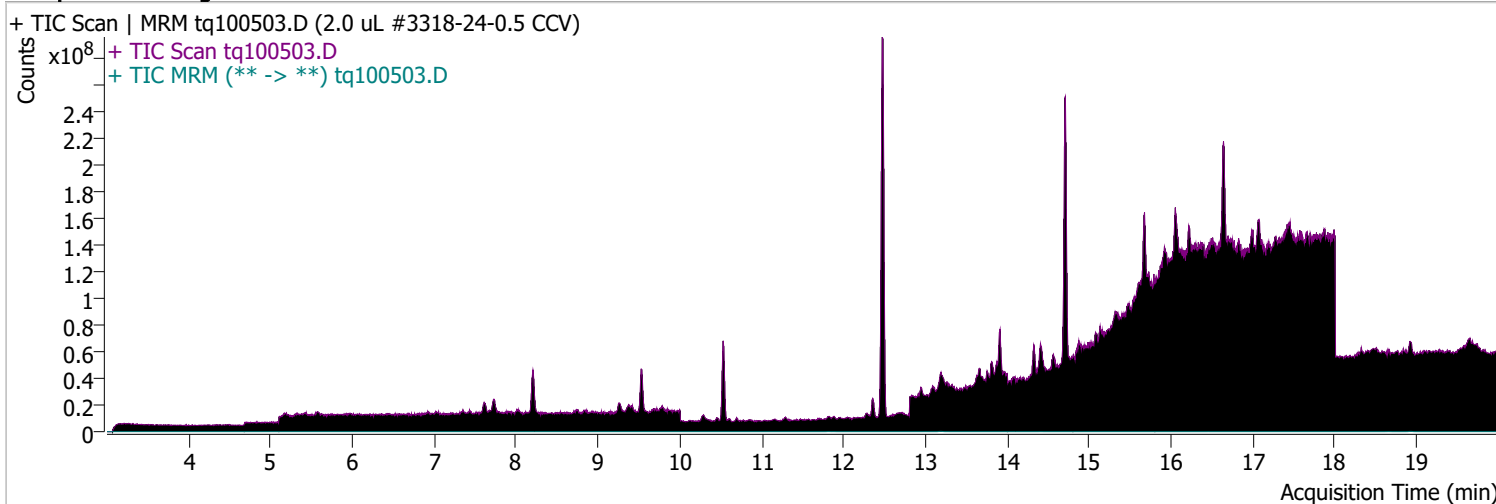


Quantitative Analysis Sample Report

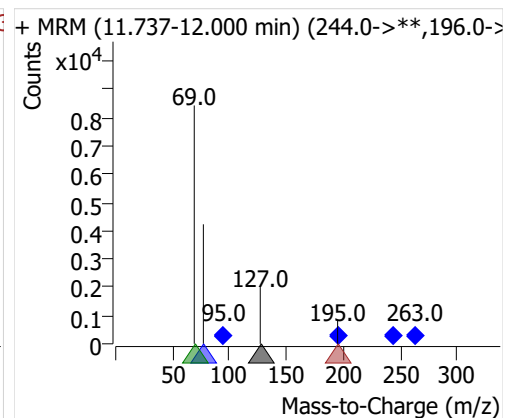
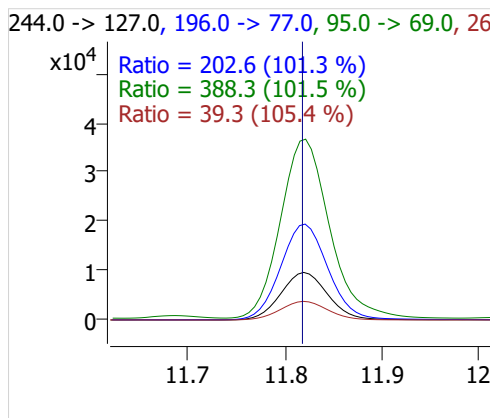
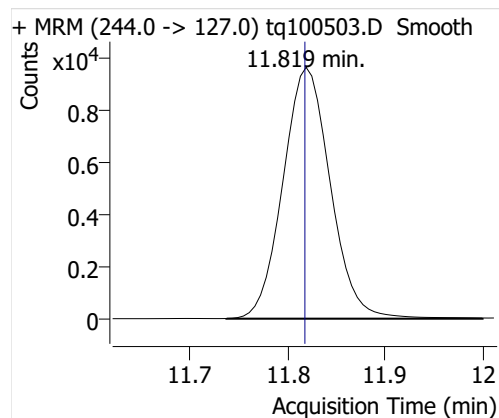
Batch Path D:\MassHunter\GCMS\1\data\05oct22\QuantResults\05oct22.batch.bin
Analysis Time 10/5/2022 10:13 AM **Analyst Name** DESKTOP-R0LAL7E\analyst
Report Time 10/28/2022 2:20:18 PM **Reporter Name** ES-AREA1\US32_USR_INS22923
Last Calib Update 10/3/2022 8:55 AM **Batch State** Processed
Quant Batch Version 10.1 **Quant Report Version** 10.1
Acq. Time 10/5/2022 10:49 AM **Data File** tq100503.D
Sample Type CC **Sample Name** 2.0 uL #3318-24-0.5 CCV
Dilution 1 **Acq. Method** tq22m0930marks

Sample Chromatogram

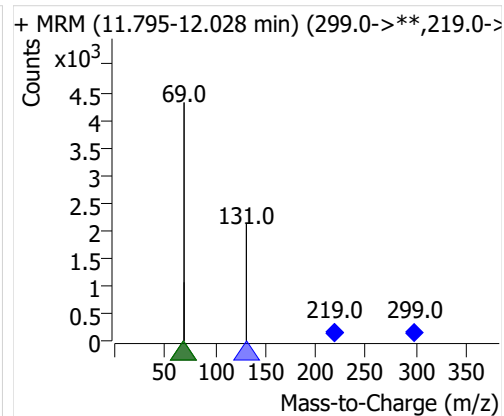
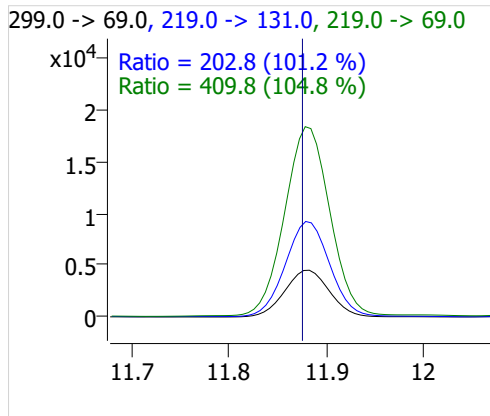
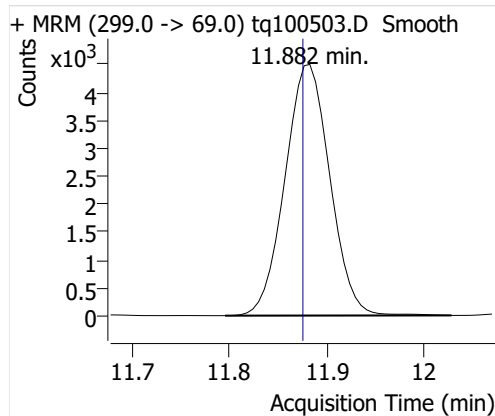


Compound	ISTD	RT	Resp.	ISTD Resp.	Resp. Ratio	Final Conc	Units
4:2 FTOH	6:2 FTOH-C13	11.819	32764	68305	0.4797	0.8726	ng
5:2sFTOH	6:2 FTOH-C13	11.882	14467	68305	0.2118	0.8950	ng
7:2sFTOH	6:2 FTOH-C13	13.183	29975	68305	0.4388	0.9221	ng
6:2 FTOH	6:2 FTOH-C13	13.209	58275	68305	0.8532	0.8449	ng
8:2 FTOH-C13	6:2 FTOH-C13	14.406	21663	68305	0.3171	0.9089	ng
8:2 FTOH	6:2 FTOH-C13	14.413	16506	68305	0.2417	0.8699	ng
10:2 FTOH	6:2 FTOH-C13	15.477	5731	68305	0.0839	0.8031	ng
12:2 FTOH	6:2 FTOH-C13	16.453	22747	68305	0.3330	0.8773	ng
NMeFOSA	6:2 FTOH-C13	18.662	17794	68305	0.2605	0.9288	ng
NEtFOSA	6:2 FTOH-C13	18.931	78456	68305	1.1486	0.9356	ng

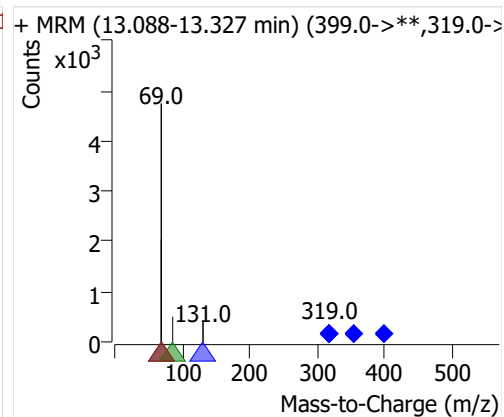
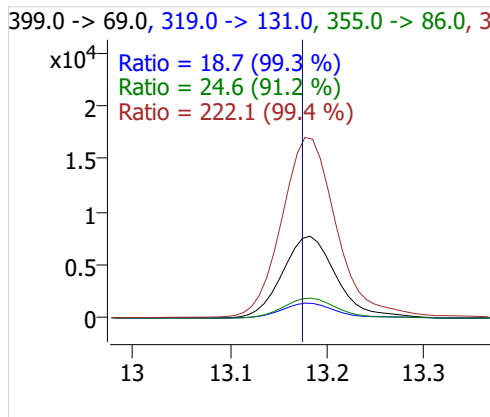
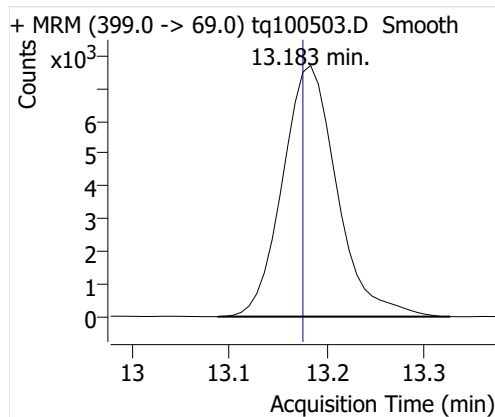
4:2 FTOH



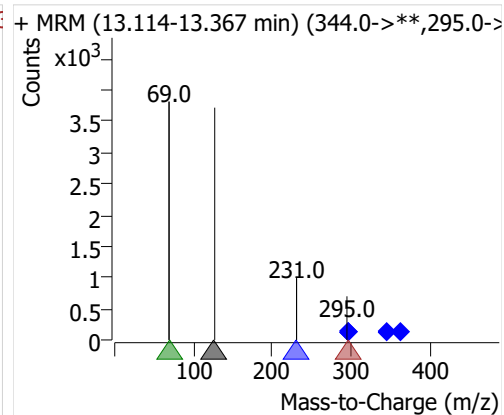
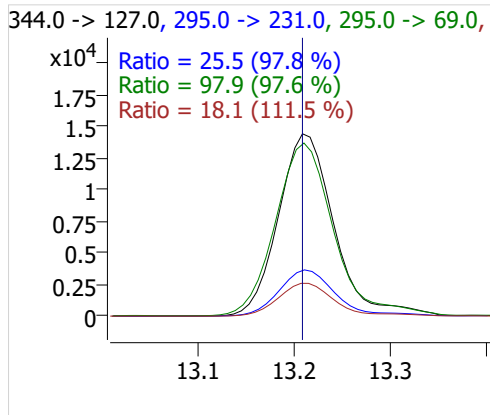
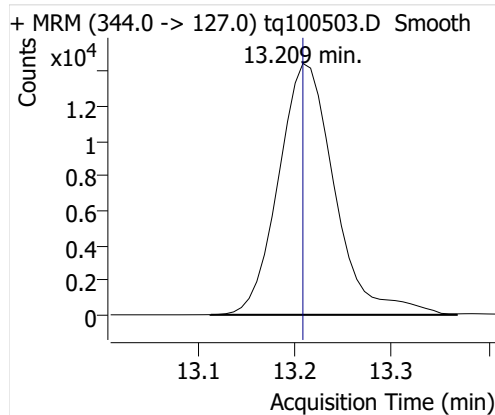
5:2sFTOH



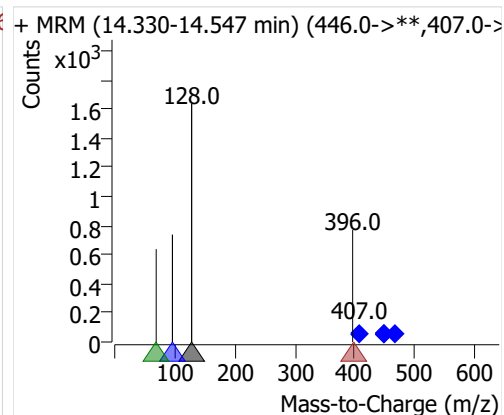
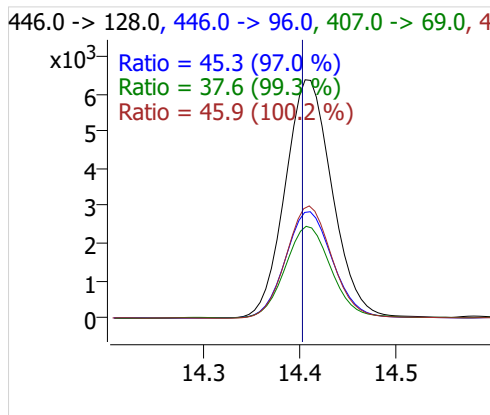
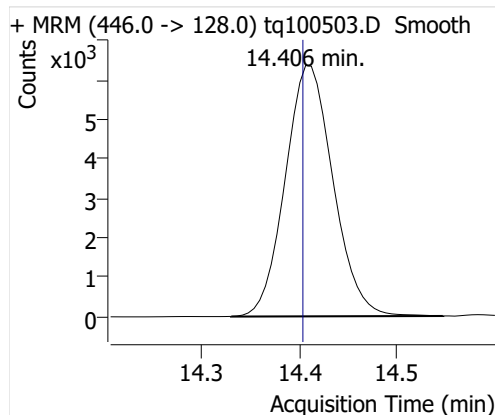
7:2sFTOH



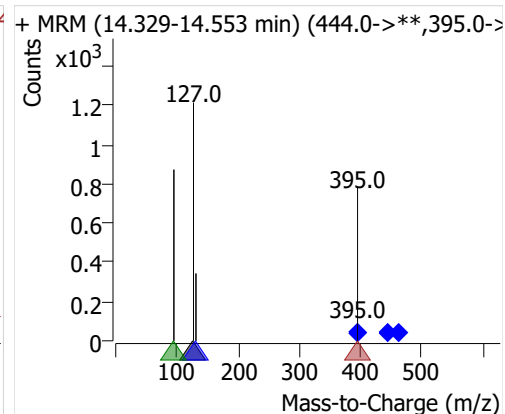
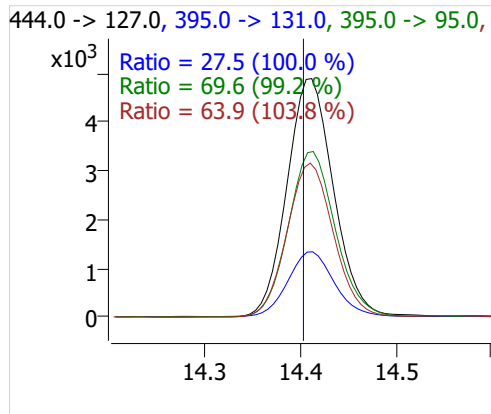
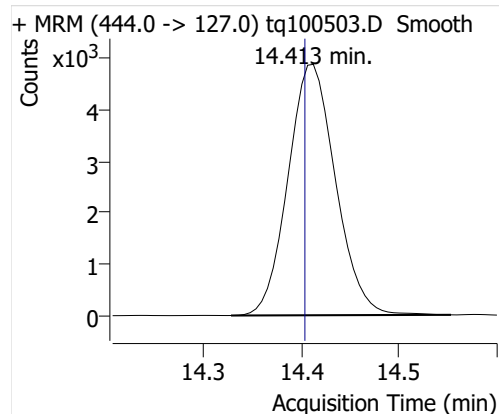
6:2 FTOH



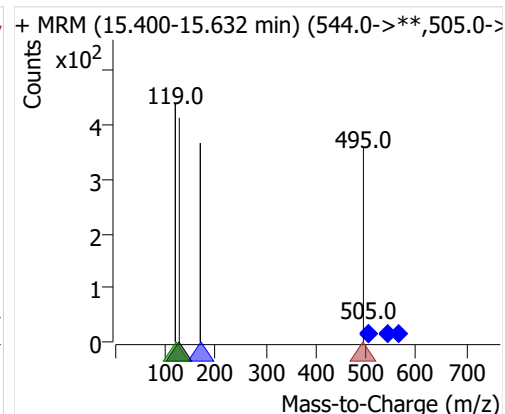
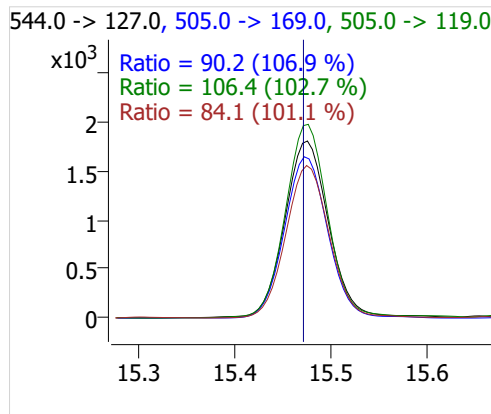
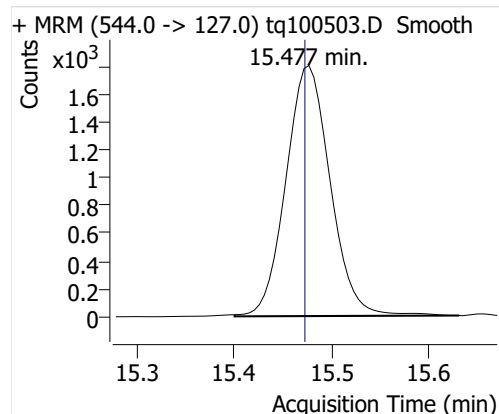
8:2 FTOH-C13



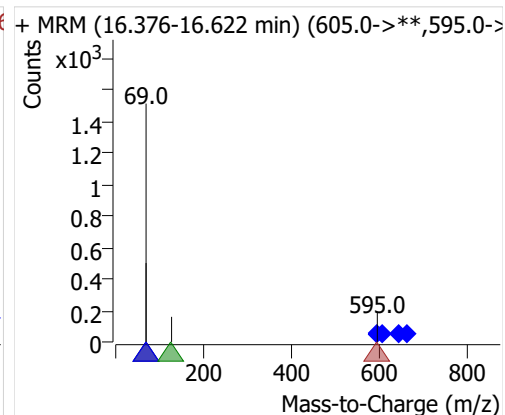
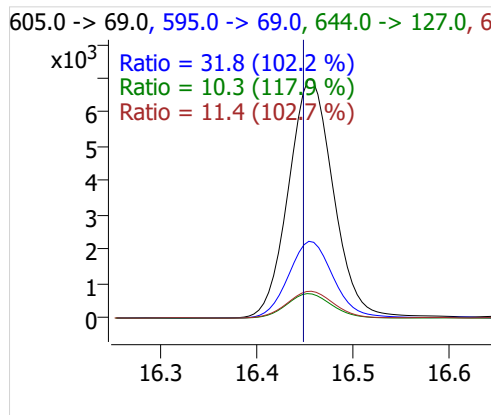
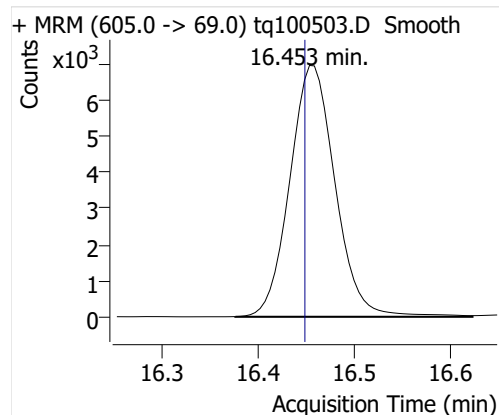
8:2 FTOH



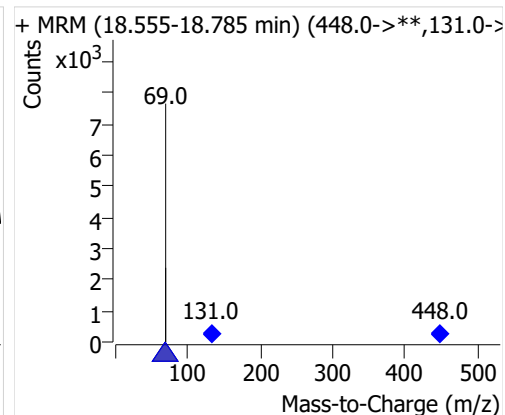
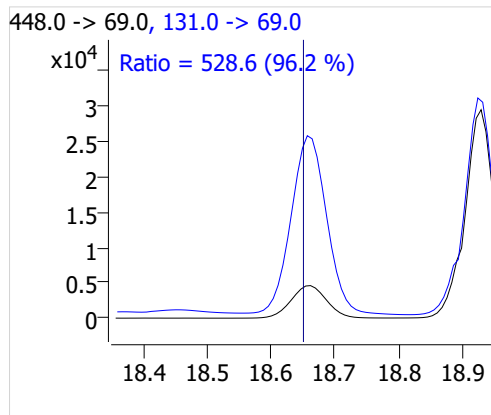
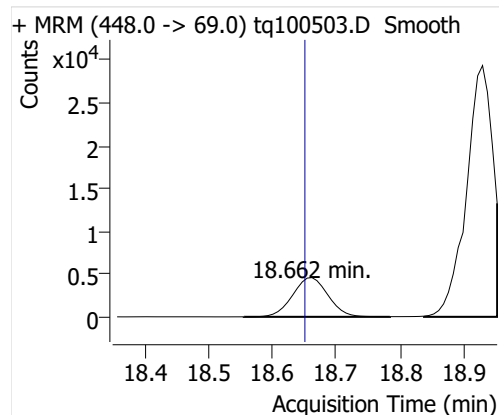
10:2 FTOH



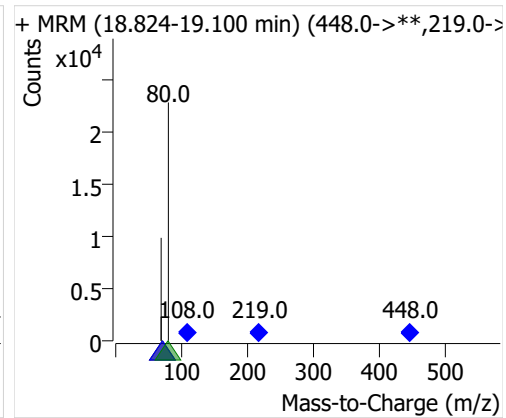
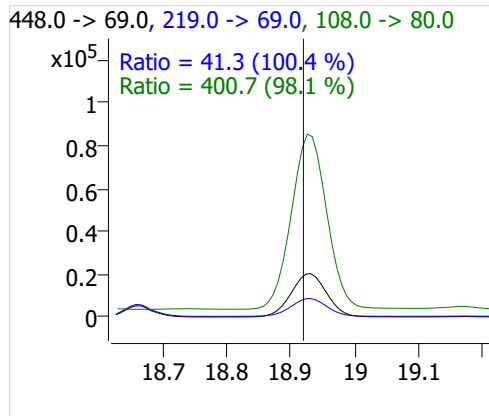
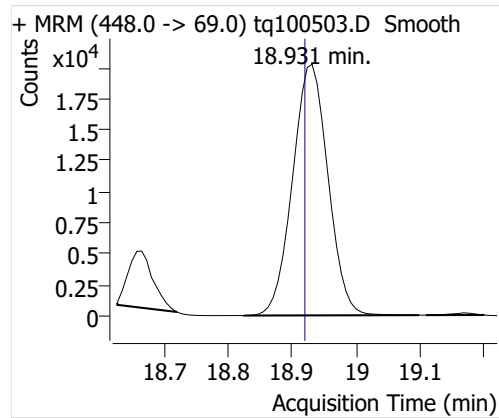
12:2 FTOH



NMeFOSA



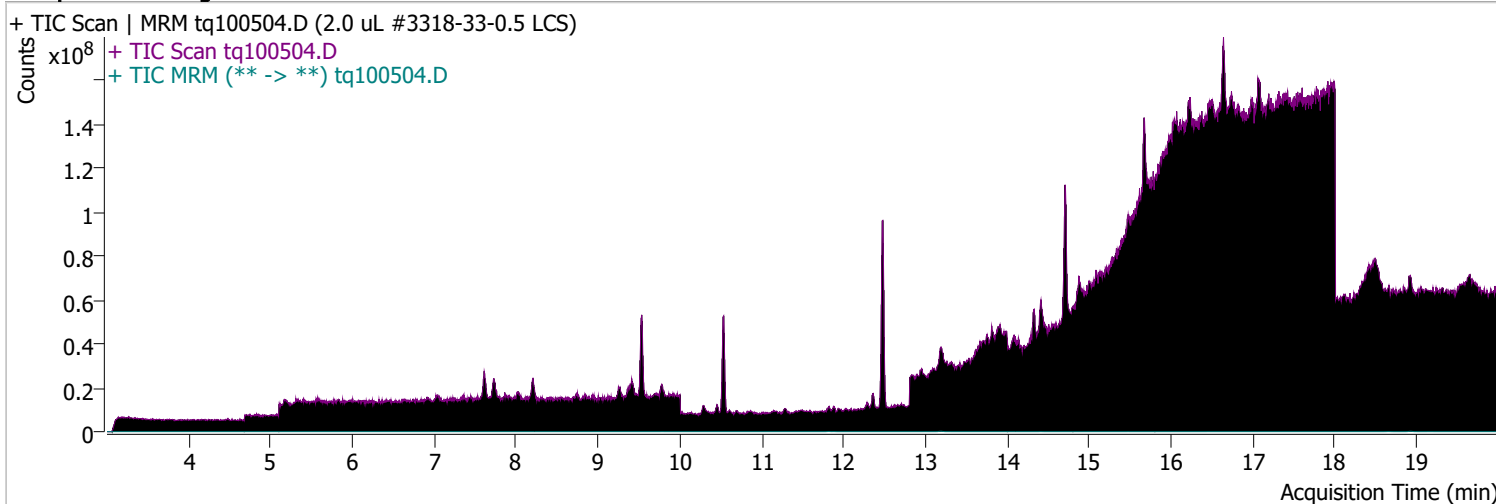
NETFOSA



Quantitative Analysis Sample Report

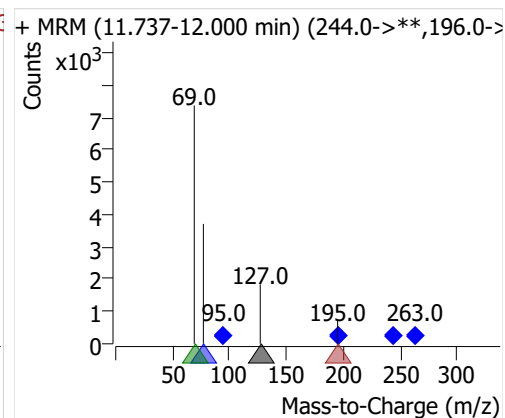
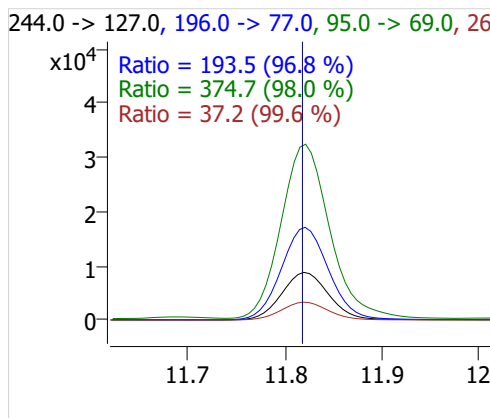
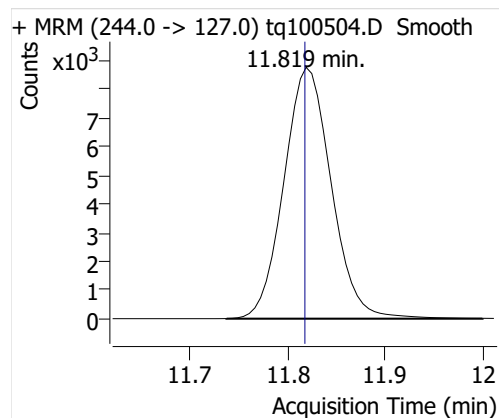
Batch Path	D:\MassHunter\GCMS\1\data\05oct22\QuantResults\05oct22.batch.bin		
Analysis Time	10/5/2022 10:13 AM	Analyst Name	DESKTOP-R0LAL7E\analyst
Report Time	10/28/2022 2:20:21 PM	Reporter Name	ES-AREA1\US32_USR_INS22923
Last Calib Update	10/3/2022 8:55 AM	Batch State	Processed
Quant Batch Version	10.1	Quant Report Version	10.1
Acq. Time	10/5/2022 11:13 AM	Data File	tq100504.D
Sample Type	QC	Sample Name	2.0 uL #3318-33-0.5 LCS
Dilution	1	Acq. Method	tq22m0930marks

Sample Chromatogram

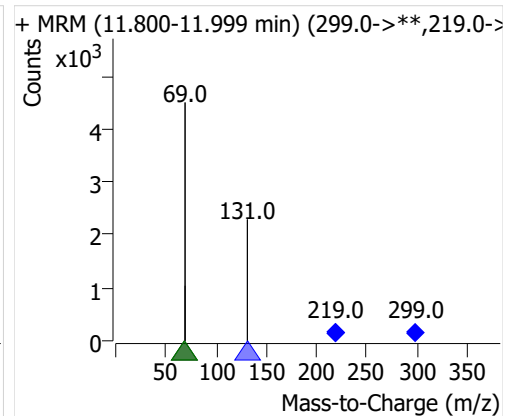
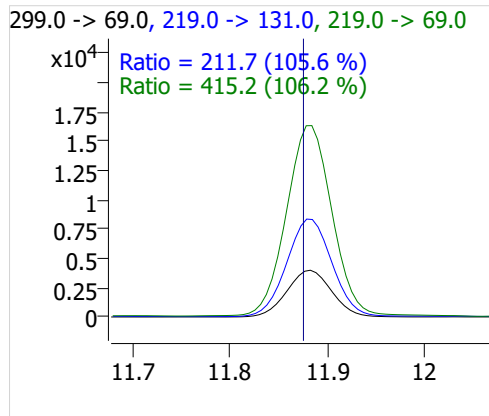
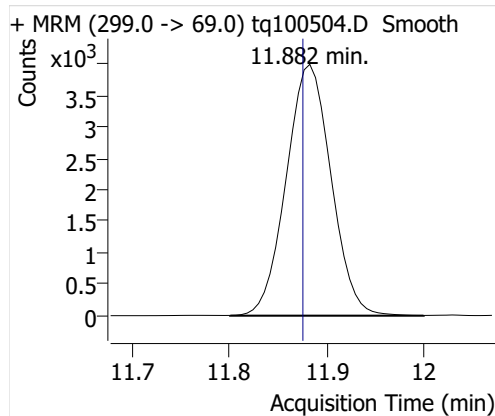


Compound	ISTD	RT	Resp.	ISTD Resp.	Resp. Ratio	Final Conc	Units
4:2 FTOH	6:2 FTOH-C13	11.819	29771	59281	0.5022	0.9136	ng
5:2sFTOH	6:2 FTOH-C13	11.882	12801	59281	0.2159	0.9125	ng
7:2sFTOH	6:2 FTOH-C13	13.183	26023	59281	0.4390	0.9224	ng
6:2 FTOH	6:2 FTOH-C13	13.209	57361	59281	0.9676	0.9583	ng
8:2 FTOH-C13	6:2 FTOH-C13	14.412	22092	59281	0.3727	1.0680	ng
8:2 FTOH	6:2 FTOH-C13	14.413	16101	59281	0.2716	0.9777	ng
10:2 FTOH	6:2 FTOH-C13	15.477	5404	59281	0.0912	0.8724	ng
12:2 FTOH	6:2 FTOH-C13	16.453	20287	59281	0.3422	0.9015	ng
NMeFOSA	6:2 FTOH-C13	18.654	15976	59281	0.2695	0.9608	ng
NEtFOSA	6:2 FTOH-C13	18.924	69176	59281	1.1669	0.9505	ng

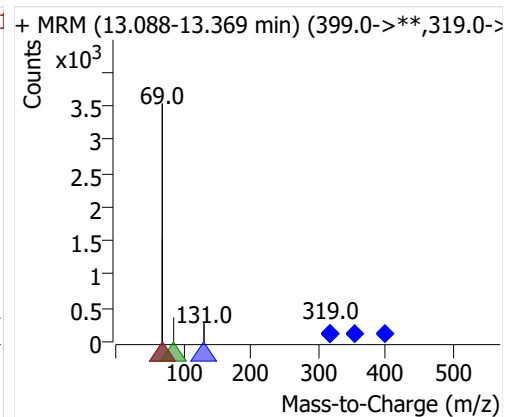
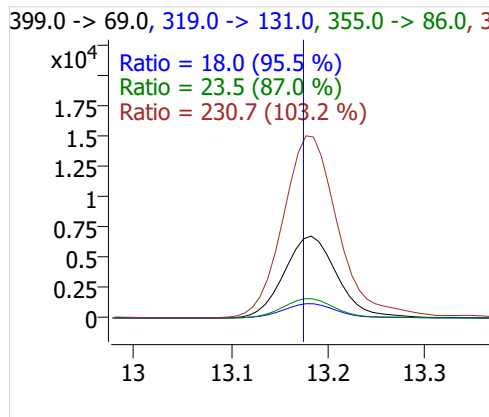
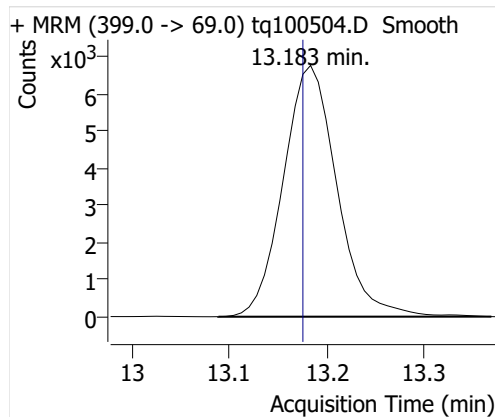
4:2 FTOH



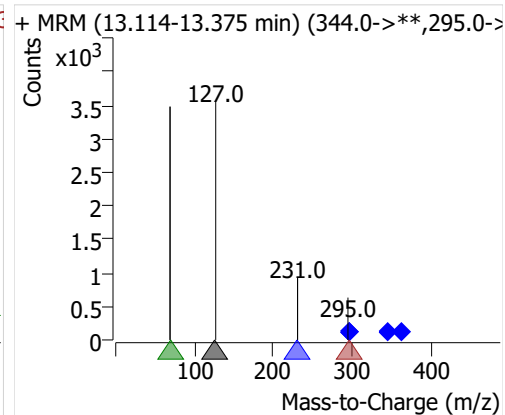
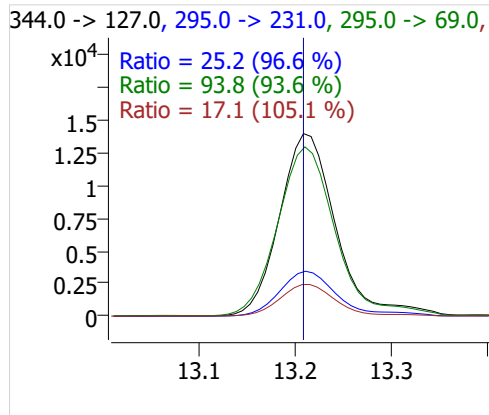
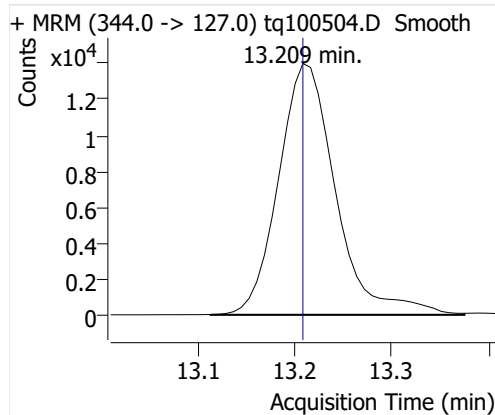
5:2sFTOH



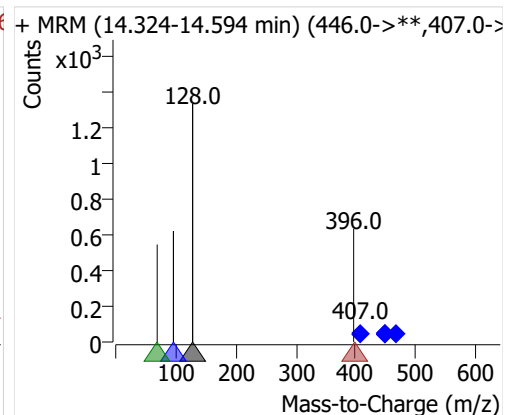
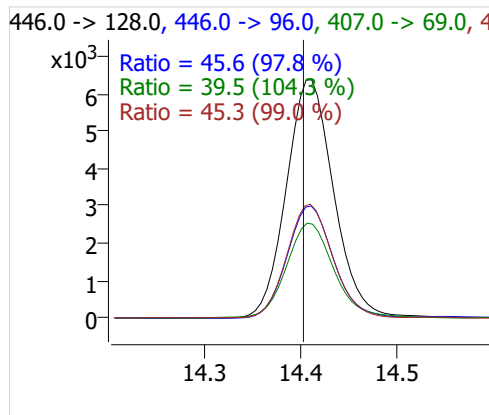
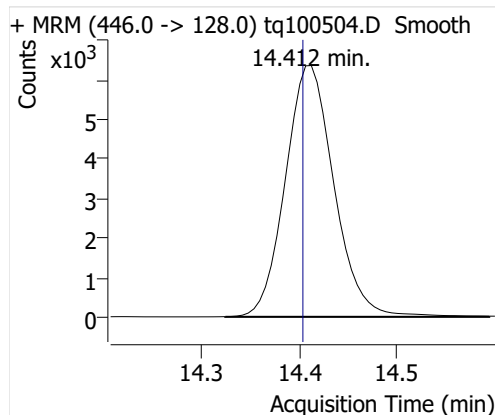
7:2sFTOH



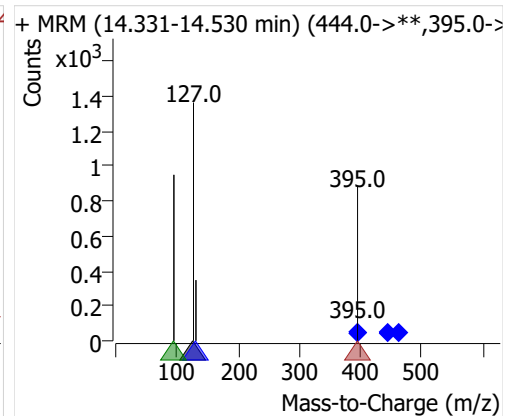
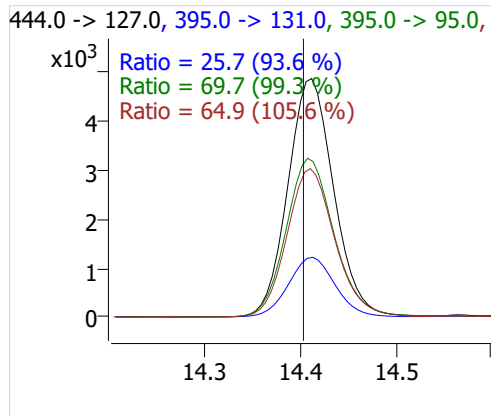
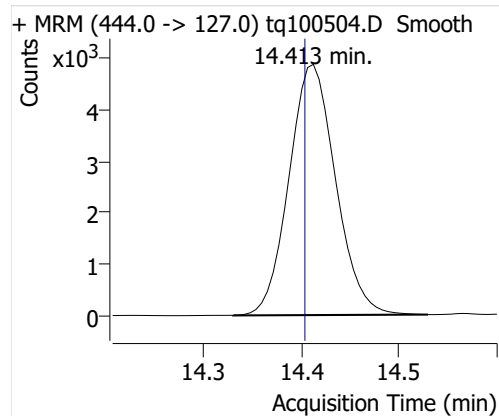
6:2 FTOH



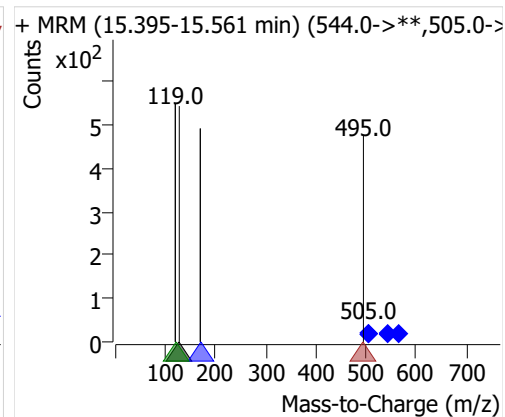
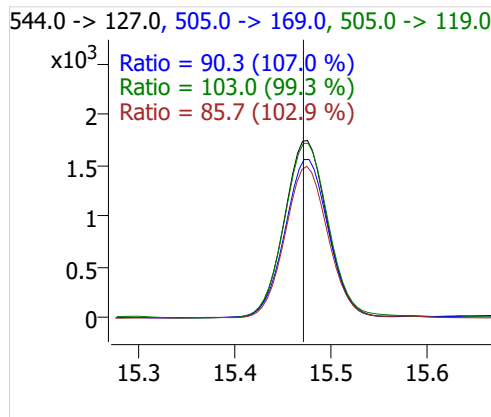
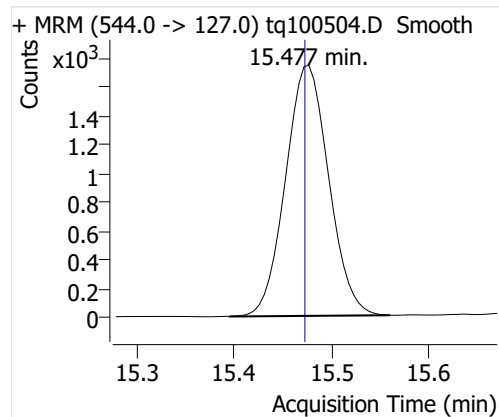
8:2 FTOH-C13



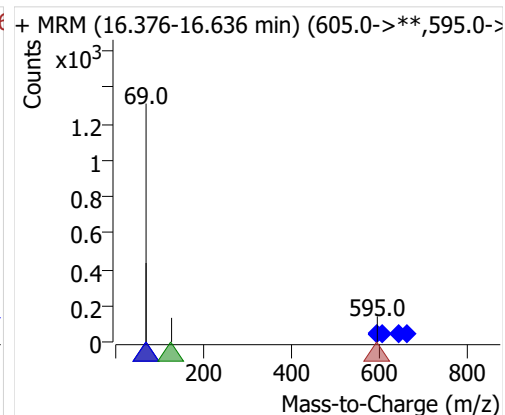
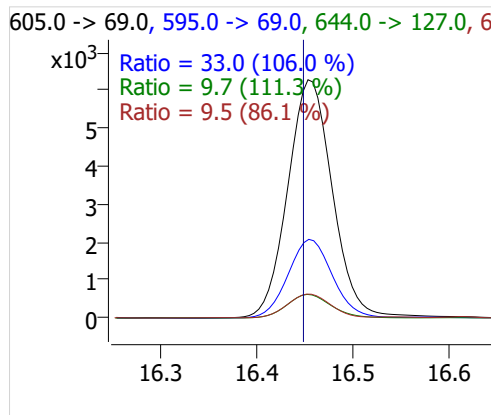
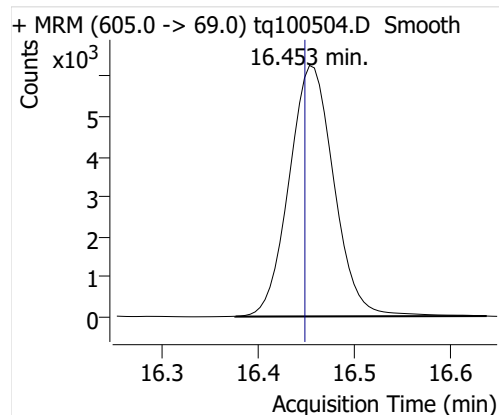
8:2 FTOH



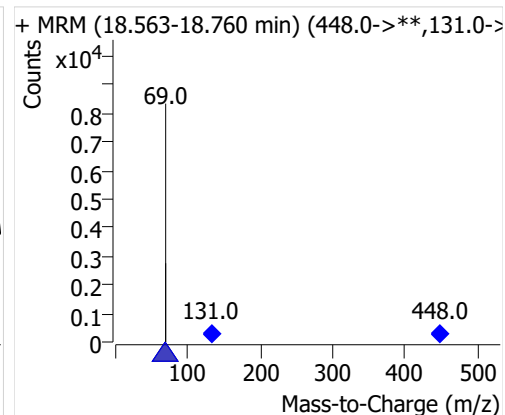
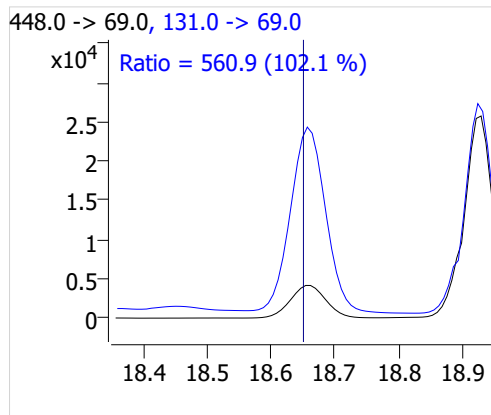
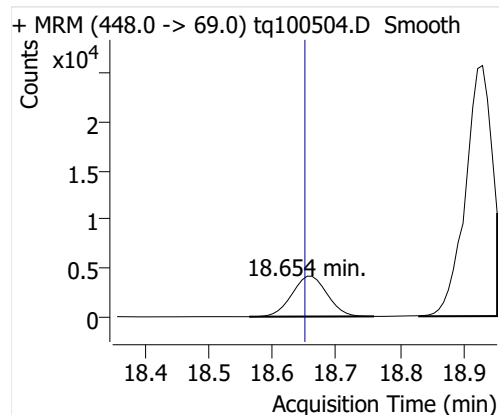
10:2 FTOH



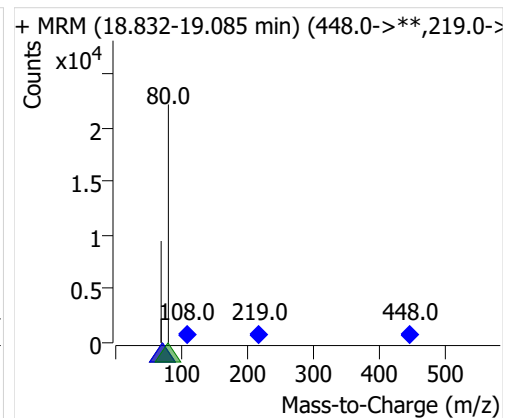
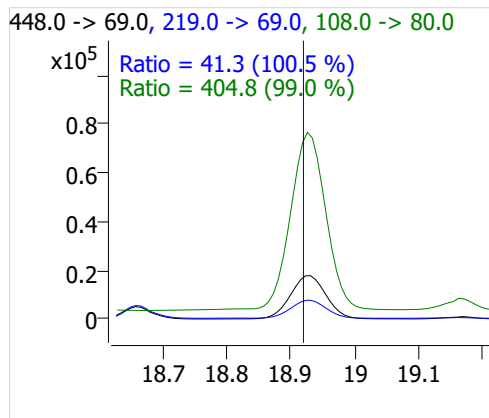
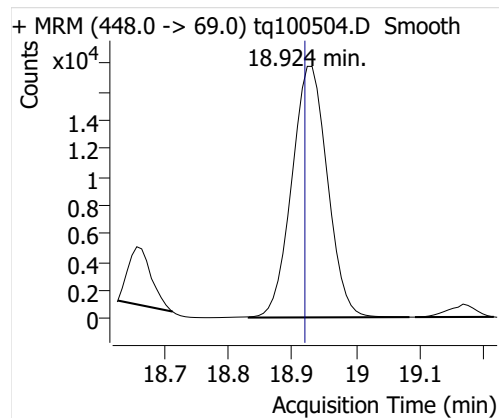
12:2 FTOH



NMeFOSA



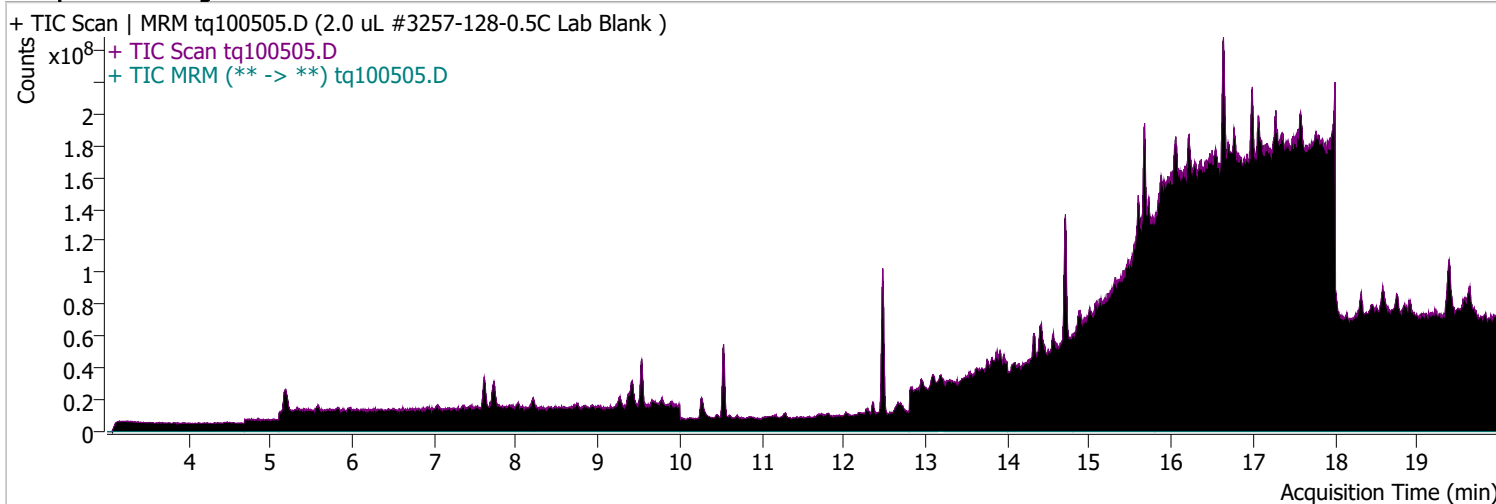
NETFOSA



Quantitative Analysis Sample Report

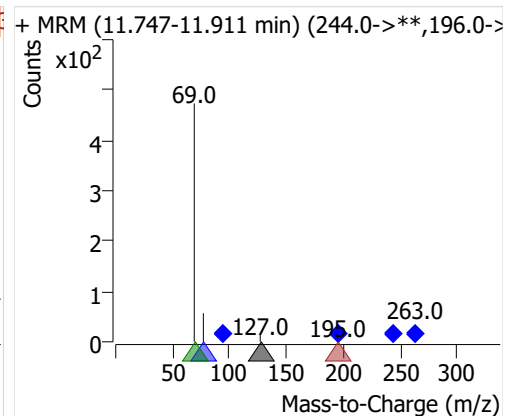
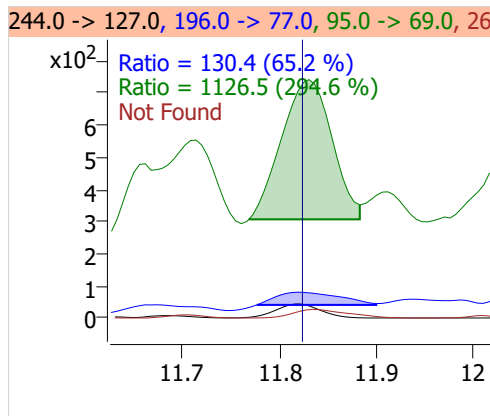
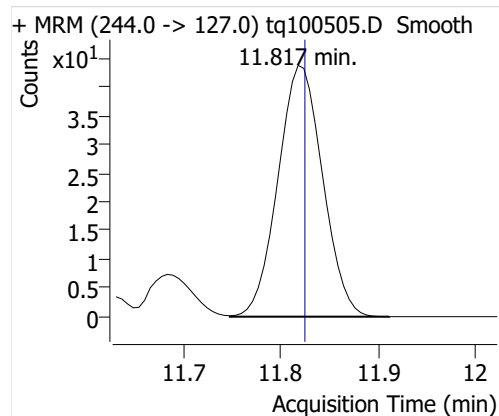
Batch Path	D:\MassHunter\GCMS\1\data\05oct22\QuantResults\05oct22.batch.bin		
Analysis Time	10/5/2022 10:13 AM	Analyst Name	DESKTOP-R0LAL7E\analyst
Report Time	10/28/2022 2:20:22 PM	Reporter Name	ES-AREA1\US32_USR_INS22923
Last Calib Update	10/3/2022 8:55 AM	Batch State	Processed
Quant Batch Version	10.1	Quant Report Version	10.1
Acq. Time	10/5/2022 11:36 AM	Data File	tq100505.D
Sample Type	Sample	Sample Name	2.0 uL #3257-128-0.5C Lab Blank
Dilution	1	Acq. Method	tq22m0930marks

Sample Chromatogram

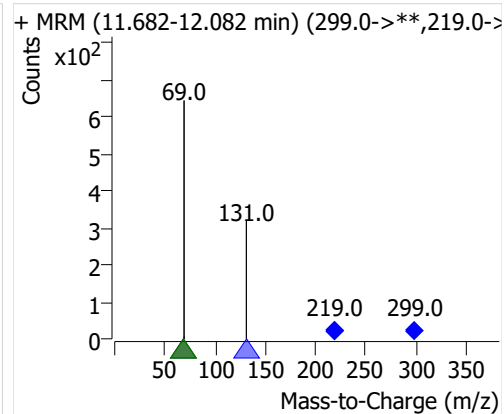
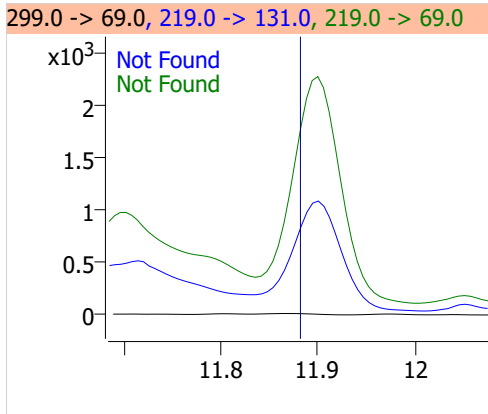
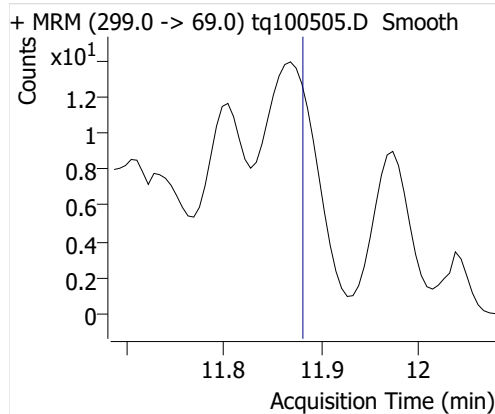


Compound	ISTD	RT	Resp.	ISTD Resp.	Resp. Ratio	Final Conc	Units
4:2 FTOH	6:2 FTOH-C13	11.817	140	62688	0.0022	0.0041	ng
5:2sFTOH	6:2 FTOH-C13			62688		ND	ng
7:2sFTOH	6:2 FTOH-C13	13.190	225	62688	0.0036	0.0075	ng
6:2 FTOH	6:2 FTOH-C13	13.208	2446	62688	0.0390	0.0386	ng
8:2 FTOH-C13	6:2 FTOH-C13	14.413	21023	62688	0.3354	0.9611	ng
8:2 FTOH	6:2 FTOH-C13	14.407	433	62688	0.0069	0.0249	ng
10:2 FTOH	6:2 FTOH-C13	15.487	203	62688	0.0032	0.0310	ng
12:2 FTOH	6:2 FTOH-C13	16.457	675	62688	0.0108	0.0284	ng
NMeFOSA	6:2 FTOH-C13	18.654	230	62688	0.0037	0.0131	ng
NetFOSA	6:2 FTOH-C13	18.931	918	62688	0.0147	0.0119	ng

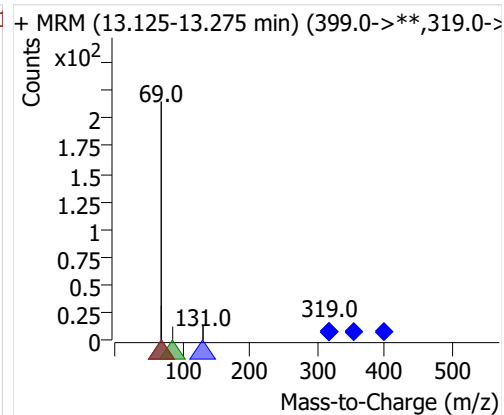
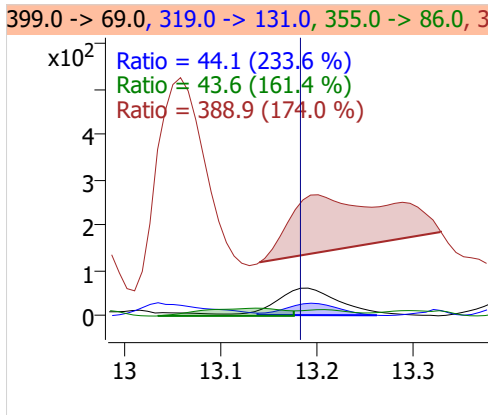
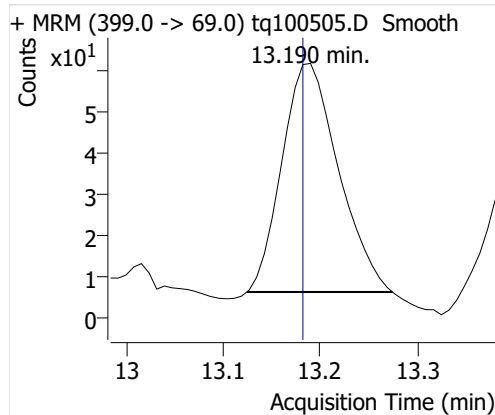
4:2 FTOH



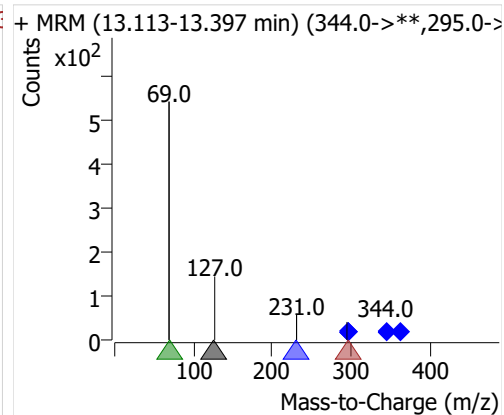
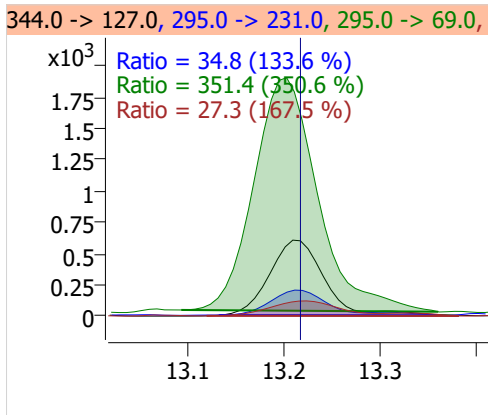
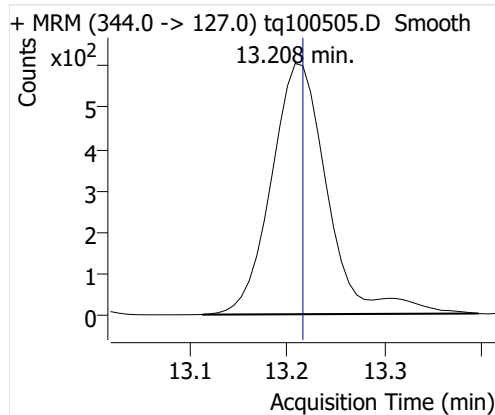
5:2sFTOH



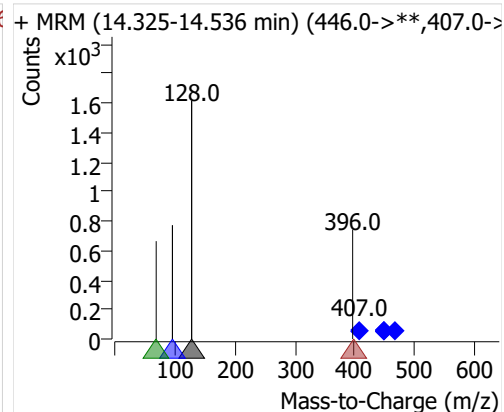
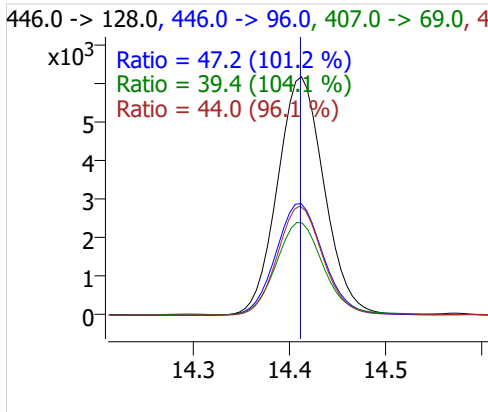
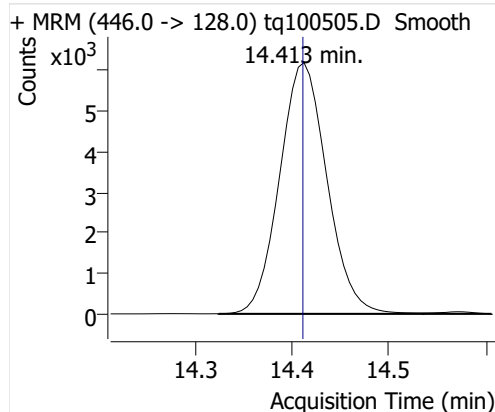
7:2sFTOH



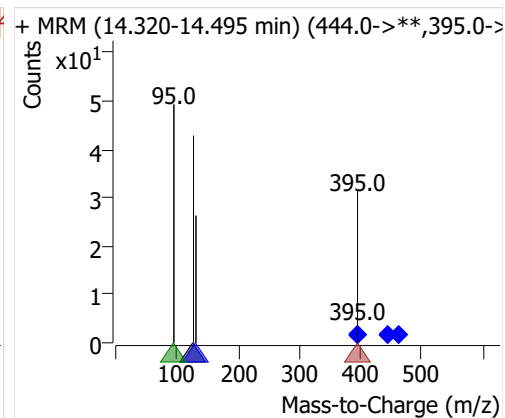
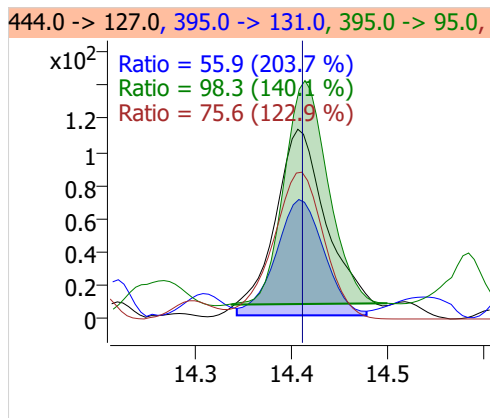
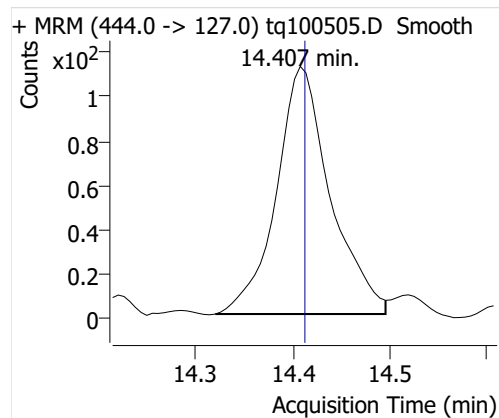
6:2 FTOH



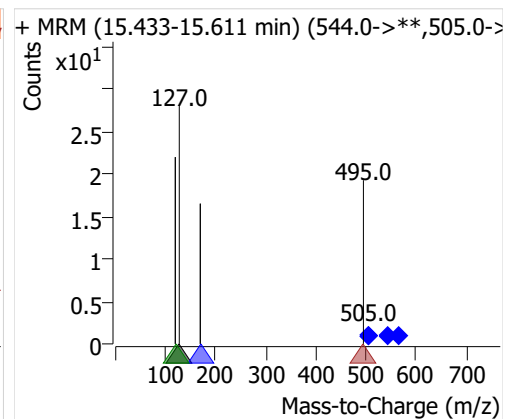
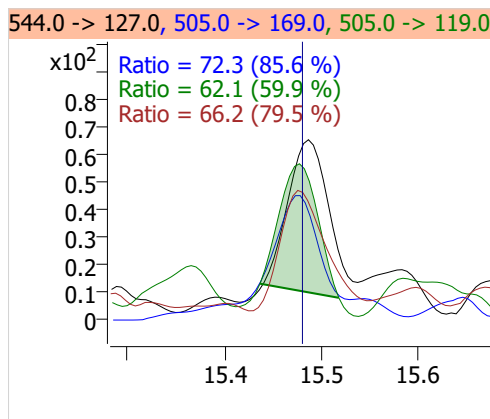
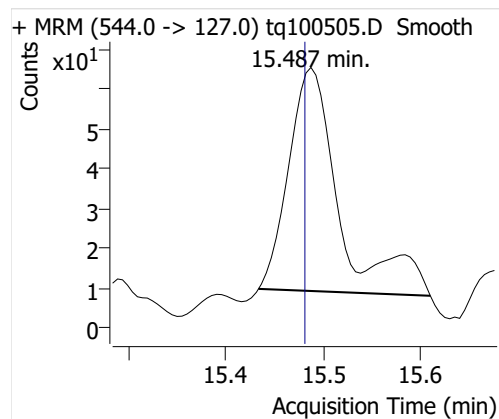
8:2 FTOH-C13



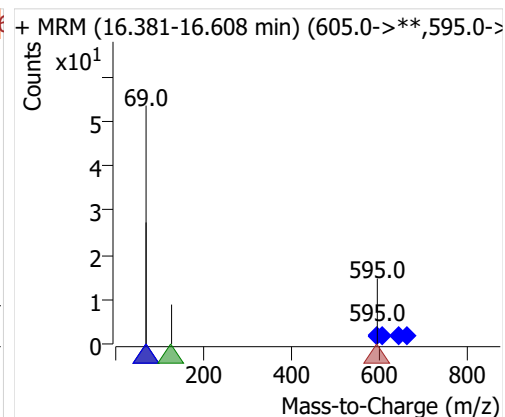
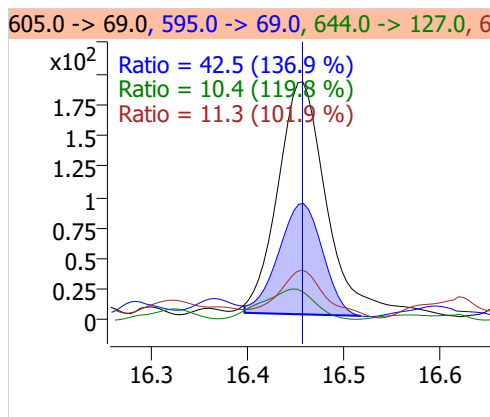
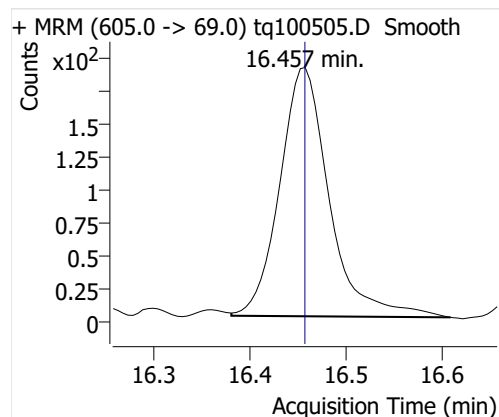
8:2 FTOH



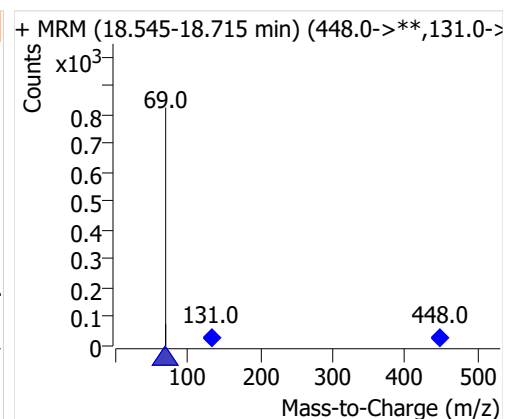
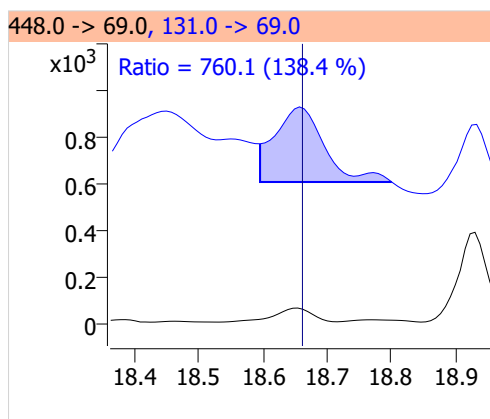
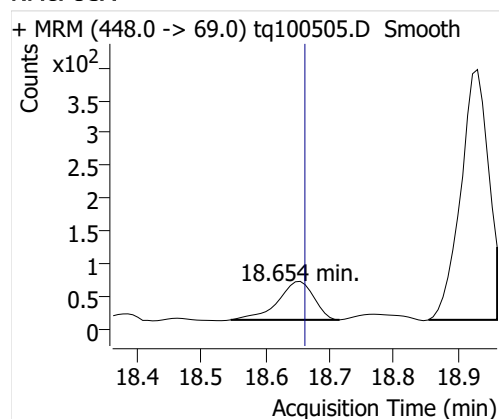
10:2 FTOH



12:2 FTOH



NMeFOSA



NETFOSA

